

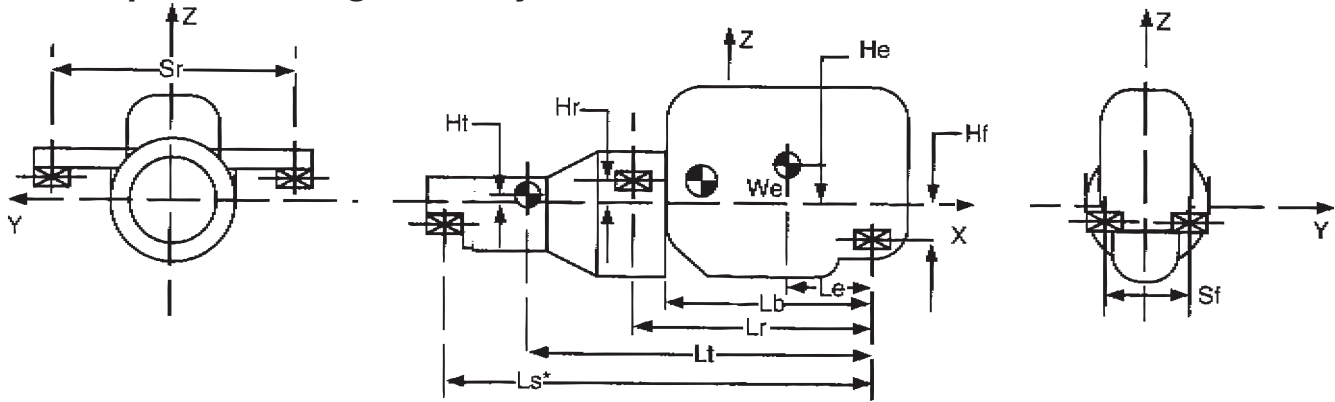


Customer Name: \_\_\_\_\_  
Phone: \_\_\_\_\_  
Email: \_\_\_\_\_

DATE: \_\_\_\_\_

Photocopy, complete the questionnaire, and mail or fax to: Mid-Atlantic Rubber; Application Engineering  
2900 Whittington Avenue · Baltimore, Maryland 21230 · Fax: 410-644-8367

### Data Required for Engine Analysis



- 1. Engine Model & Manufacturer \_\_\_\_\_
- 2. Transmission Model & Manufacturer \_\_\_\_\_
- 3. Engine Weight (Wet, Including Accessories) We = \_\_\_\_\_
- 4. Transmission Weight (Wet) Wt = \_\_\_\_\_
- 5. Engine C.G. Height Above CSCL He = \_\_\_\_\_
- 6. Transmission C.G. Height Above/Below CSCL Ht = \_\_\_\_\_
- 7. Front Mount Location Above/Below CSCL Hf = \_\_\_\_\_
- 8. Rear Mount Location Above/Below CSCL Hr = \_\_\_\_\_
- 9. Engine C.G. Location Behind Front Mount Le = \_\_\_\_\_
- 10. Rear Face of Block Behind Front Mount Lb = \_\_\_\_\_
- 11. Rear Mount Location Behind Front Mount Lr = \_\_\_\_\_
- 12. Transmission C.G. Location Behind Front Mount Lt = \_\_\_\_\_
- 13. Rear Mounting Spread Sr = \_\_\_\_\_
- 14. Front Mounting Spread (Zero for Single Front Mount) Sf = \_\_\_\_\_
- 15. Engine Speed NI = \_\_\_\_\_  
  - Idle
  - Operating NO = \_\_\_\_\_
- 16. Number of Cylinders and Arrangement (I-6, 90° V-8, etc.) \_\_\_\_\_
- 17. Two or Four Stroke \_\_\_\_\_
- 18. Tail Support Location Behind Front Mount (if applicable) Ls = \_\_\_\_\_
- 19\*. Moments of Inertia of Total System or for all Components Ixx = \_\_\_\_\_  
 (Engine, Transmission, etc.) Iyy = \_\_\_\_\_  
 (If these are not available, a drawing of the Engine/Transmission System Izz = \_\_\_\_\_  
 is required, outline dimensions required.) TO = \_\_\_\_\_
- 20. Output Torque (Including highest gear multiplication) \_\_\_\_\_
- 21. Firing Sequence \_\_\_\_\_
- 22. Crankshaft Arrangement (# of Throws, Staggered Throw, etc.) \_\_\_\_\_
- 23. Application:  on-highway;  off-highway;  severe duty (provide details of application) \_\_\_\_\_

\* A tail support mount is necessary if static bending moment on rear face of block (RFOB) is greater than the manufacturing's rating.